

Oct 21, 2020 10:10

W01/02PRI Pre 2017 - Quick Installation Guide - English

i The steps below help you to connect and configure your PRI gateway. W01PRI and W02PRI are ISDN VoIP media gateways offer respectively 30 or 60 voice channels.

Useful links:

- [Media Gateways Datasheet](#)
- [W01-02PRI 2017 Installation Admin Guide](#)

Updated: March 2017

Permalink: <https://confluence.wildix.com/x/LAg8AQ>

- [Connection to power supply](#)
- [Connection to Ethernet](#)
 - [Connecting W01/02PRI using DHCP server](#)
 - [Connecting W01/02PRI using a static IP address](#)
- [Configuration of the gateway](#)
- [Firmware upgrade](#)
- [Connection to the line](#)
- [Reset of the gateway](#)
- [Mounting racks](#)

Connection to power supply

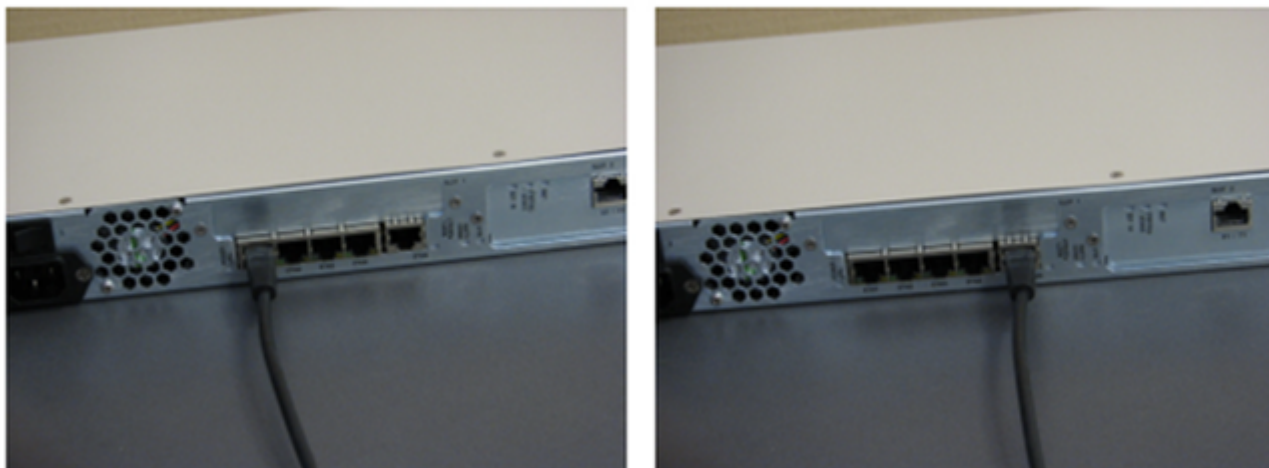
Connect the gateway using the power supply and the cable provided with the PRI gateway, as it is shown on the picture:



Connection to Ethernet

On the rear panel of the gateway there are five network ports:

- ETH5 port: used as WAN port
- ETH1 – ETH4: used as LAN port



Access via WAN port:

- Connect WAN port (ETH5) to the same network as the PBX or an external DHCP server (for instance, its Router)
- As soon as the DHCP server assigns an IP address to the gateway, you can pass to the next step of the gateway configuration
- In case the PBX is used as a DHCP server, the gateway is detected on the network automatically
- In case an external DHCP server is used, check the list of the active leases to detect the IP address assigned to the gateway

Connecting W01/02PRI using DHCP server

Before you start:

- Make sure that your network connection is working
- You must use an IPv4 Network
- The IPv4 Network must have a DHCP server
- If you do not have access to the DHCP server's logs, then follow instructions described in Connecting W01/02PRI using a static IP address

Steps

- Connect a 10/100/1000 BaseT Ethernet RJ-45 cable into the ETH1 connector of the device
- Connect the other end of the cable to a router/switch connected to your Network
- Validate the installation
- Turn on the power sources that are used to power the gateway at the circuit breaker
- Turn on the power switch of the PRI gateway
- Consult the DHCP server's logs to find out your IP address

Result

The Power LED on the device will be flashing when the device performs a DHCP server query. It will become solid once it successfully gets an IP address from the DHCP server. At this point, you can now use the DHCP IP address to access your device's management interface.

Connecting W01/02PRI using a static IP address

Before you start:

- Your network interface must be set with an IP address in the 192.168.0.0/24 subnet (e.g. 192.168.0.11)
- You must use an IPv4 Network
- Make sure that your network connection is working

Steps

- Connect a 10/100/1000 BaseT Ethernet RJ-45 cable into the ETH5/ETH5/EXT Ethernet connector of the device
- Connect the other end of the cable into your PC
- Validate the installation
- Turn on the power sources that are used to power the PRI gateway at the circuit breaker
- Turn on the power switch of the PRI gateway

Result

You can now use the 192.168.0.10 IP address to access your device's management interface.

Configuration of the gateway

Follow our [online Guide](#) to provision the PRI gateway.

For remote/ unreachable media gateways behind NAT/ Firewall, follow our [online Guide about remote provisioning](#).

Trunk parameters: [Trunk Settings Guide](#), [BRI/ PRI Trunk Settings](#).

Firmware upgrade

Starting from WMS v. 5.01.20200508.1, PRI media gateways are directly upgraded via internet connection to firmwares.wildix.com or custom server defined in WMS [Settings](#) -> *Tools and utilities* -> *Upgrade* -> *Custom firmware server*.

- Media gateway must have access to the Internet to get a new firmware
- If there is no Internet access and media gateways provisioned to HW/ VM PBX, enable the option *Enable routing eth0* in WMS [Settings](#) -> *System* -> *Network*

Starting from PRI firmware version 44.1.1605 and higher, upgrade is performed via single firmware (binary) file. If you have media gateways with version 42.2.XXX and lower, proceed with the following steps:

1. Manually upgrade devices to version 43.1.1264 (steps are described in [How to manually upgrade W01-W02PRI 2017](#))
2. Within half an hour, media gateways are automatically updated to the latest firmware version 45.1.1870

Otherwise, skipping the upgrade to 43.1.1264 can lead to infinite transferring of configuration scripts.

Connection to the line

On the rear panel of the gateway, there are one or two modules with an Ethernet port marked as E1/T1 (Slot2 and Slot3).

Connect your PRI line to this port, as it is shown on the picture below:



Reset of the gateway

In case you need to reconfigure the gateway, you should perform a reset procedure, as shown on the picture. The switch marked as “*Reset/Default*” is situated on the rear panel of the gateway.

- Use the paper clip or the object of the similar shape to press the button
- Hold the button until all the LEDs of the gateway stop blinking and remain turned on (circa 10 seconds)
- Release the button and wait for the reboot of the gateway



In case the LEDs remain turned on for more than one minute after the reset procedure, disconnect the power supply and repeat the reset procedure when the device starts.

Mounting racks

Attach two racks provided with the gateway to the device, as shown on the picture:



